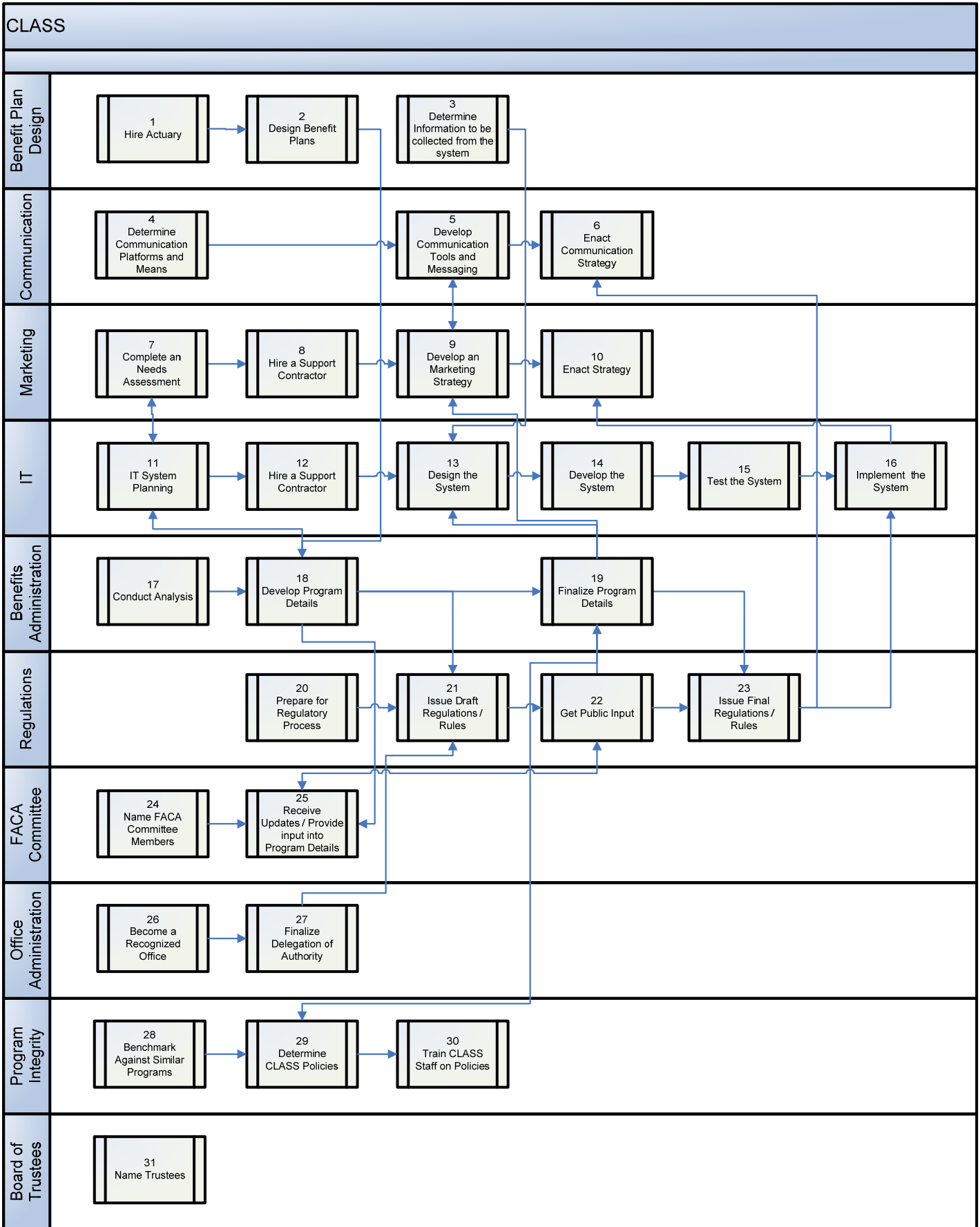


**A REPORT ON THE ACTUARIAL,
MARKETING, AND LEGAL ANALYSES
OF THE CLASS PROGRAM**

APPENDIX E:

CLASS PROCESS FLOW CHART

High-Level CLASS Process Diagram



For Internal Discussion Only

A REPORT ON THE ACTUARIAL, MARKETING, AND LEGAL ANALYSES OF THE CLASS PROGRAM

For additional information, you may visit the DALTCP home page at http://aspe.hhs.gov/_/office_specific/daltcp.cfm or contact the office at HHS/ASPE/DALTCP, Room 424E, H.H. Humphrey Building, 200 Independence Avenue, SW, Washington, DC 20201. The e-mail address is: webmaster.DALTCP@hhs.gov.

Files Available for This Report

[HTML versions of Appendices will be added as they are formatted]

| | |
|--|--|
| Main Report | [48 PDF pages] |
| | http://aspe.hhs.gov/daltcp/reports/2011/class/index.shtml http://aspe.hhs.gov/daltcp/reports/2011/class/index.pdf |
| APPENDIX A: Key Provisions of Title VIII of the ACA, Which Establishes the CLASS Program | [6 PDF pages] |
| | http://aspe.hhs.gov/daltcp/reports/2011/class/appA.htm http://aspe.hhs.gov/daltcp/reports/2011/class/appA.pdf |
| APPENDIX B: HHS Letters to Congress About Intent to Create Independent CLASS Office | [11 PDF pages] |
| | http://aspe.hhs.gov/daltcp/reports/2011/class/appB.htm http://aspe.hhs.gov/daltcp/reports/2011/class/appB.pdf |
| APPENDIX C: <u>Federal Register</u> Announcement Establishing CLASS Office | [2 PDF pages] |
| | http://aspe.hhs.gov/daltcp/reports/2011/class/appC.htm http://aspe.hhs.gov/daltcp/reports/2011/class/appC.pdf |
| APPENDIX D: CLASS Office Organizational Chart | [2 PDF pages] |
| | http://aspe.hhs.gov/daltcp/reports/2011/class/appD.pdf |
| APPENDIX E: CLASS Process Flow Chart | [2 PDF pages] |
| | http://aspe.hhs.gov/daltcp/reports/2011/class/appE.pdf |
| APPENDIX F: <u>Federal Register</u> Announcement for CLASS Independence Advisory Council | [3 PDF pages] |
| | http://aspe.hhs.gov/daltcp/reports/2011/class/appF.htm http://aspe.hhs.gov/daltcp/reports/2011/class/appF.pdf |
| APPENDIX G: Personal Care Attendants Workforce Advisory Panel and List of Members | [6 PDF pages] |
| Full Appendix | http://aspe.hhs.gov/daltcp/reports/2011/class/appG.htm http://aspe.hhs.gov/daltcp/reports/2011/class/appG.pdf |
| Ga: <u>Federal Register</u> Announcement for Personal Care Attendants Workforce Advisory Panel | http://aspe.hhs.gov/daltcp/reports/2011/class/appGa.pdf |
| Gb: Advisory Panel List of Members | http://aspe.hhs.gov/daltcp/reports/2011/class/appGb.pdf |

| | |
|---|---|
| APPENDIX H: Policy Papers Discussed by the LTC Work Group | [36 PDF pages] |
| | http://aspe.hhs.gov/daltcp/reports/2011/class/appH.htm |
| | http://aspe.hhs.gov/daltcp/reports/2011/class/appH.pdf |
| APPENDIX I: CLASS Administration Systems Analysis and RFI | [10 PDF pages] |
| | http://aspe.hhs.gov/daltcp/reports/2011/class/appI.htm |
| | http://aspe.hhs.gov/daltcp/reports/2011/class/appI.pdf |
| APPENDIX J: Additional Analyses for Early Policy Analysis | [150 PDF pages] |
| Full Appendix | http://aspe.hhs.gov/daltcp/reports/2011/class/appJ.pdf |
| Ja: A Profile of Declined Long-Term Care Insurance Applicants | http://aspe.hhs.gov/daltcp/reports/2011/class/appJa.pdf |
| Jb: CLASS Program Benefit Triggers and Cognitive Impairment | http://aspe.hhs.gov/daltcp/reports/2011/class/appJb.pdf |
| Jc: Strategic Analysis of HHS Entry into the Long-Term Care Insurance Market | http://aspe.hhs.gov/daltcp/reports/2011/class/appJc.pdf |
| Jd: Managing a Cash Benefit Design in Long-Term Care Insurance | http://aspe.hhs.gov/daltcp/reports/2011/class/appJd.pdf |
| APPENDIX K: Early Meetings with Stakeholders | [4 PDF pages] |
| | http://aspe.hhs.gov/daltcp/reports/2011/class/appK.htm |
| | http://aspe.hhs.gov/daltcp/reports/2011/class/appK.pdf |
| APPENDIX L: In-Depth Description of ARC Model | [62 PDF pages] |
| | http://aspe.hhs.gov/daltcp/reports/2011/class/appL.pdf |
| APPENDIX M: In-Depth Description of Avalere Health Model | [23 PDF pages] |
| | http://aspe.hhs.gov/daltcp/reports/2011/class/appM.htm |
| | http://aspe.hhs.gov/daltcp/reports/2011/class/appM.pdf |
| APPENDIX N: September 22, 2010 Technical Experts Meeting | [61 PDF pages] |
| Full Appendix | http://aspe.hhs.gov/daltcp/reports/2011/class/appN.htm |
| | http://aspe.hhs.gov/daltcp/reports/2011/class/appN.pdf |
| Na: Agenda, List of Participants, and Speaker Bios | http://aspe.hhs.gov/daltcp/reports/2011/class/appNa.pdf |
| Nb: Presentation Entitled "Actuarial Research Corporation's Long Term Care Insurance Model" | http://aspe.hhs.gov/daltcp/reports/2011/class/appNb.pdf |
| Nc: Presentation Entitled "The Long-Term Care Policy Simulator Model" | http://aspe.hhs.gov/daltcp/reports/2011/class/appNc.pdf |
| Nd: Presentation Entitled "Comments on 'The Long-Term Care Policy Simulator Model'" | http://aspe.hhs.gov/daltcp/reports/2011/class/appNd.pdf |
| APPENDIX O: Actuarial Report on the Development of CLASS Benefit Plans | [47 PDF pages] |
| | http://aspe.hhs.gov/daltcp/reports/2011/class/appO.pdf |

APPENDIX P: June 22, 2011 Technical Experts Meeting
Full Appendix

[77 PDF pages]

<http://aspe.hhs.gov/daltcp/reports/2011/class/appP.htm>

<http://aspe.hhs.gov/daltcp/reports/2011/class/appP.pdf>

Pa: Agenda and Discussion Issues and
Questions

<http://aspe.hhs.gov/daltcp/reports/2011/class/appPa.pdf>

Pb: Presentation Entitled "Core Assumptions and
Model Outputs"

<http://aspe.hhs.gov/daltcp/reports/2011/class/appPb.pdf>

Pc: Presentation Entitled "Actuarial Research
Corporation's Long Term Care Insurance
Model"

<http://aspe.hhs.gov/daltcp/reports/2011/class/appPc.pdf>

Pd: Presentation Entitled "The Avalere Long-
Term Care Policy Simulator Model"

<http://aspe.hhs.gov/daltcp/reports/2011/class/appPd.pdf>

Pe: Presentation Entitled "Alternative Approaches
to CLASS Benefit Design: The CLASS
Partnership"

<http://aspe.hhs.gov/daltcp/reports/2011/class/appPe.pdf>

APPENDIX Q: Table 2: Actuarial and Demographic Assumptions

[2 PDF pages]

<http://aspe.hhs.gov/daltcp/reports/2011/class/appQ.htm>

<http://aspe.hhs.gov/daltcp/reports/2011/class/appQ.pdf>

APPENDIX R: Figure 1: Daily Benefit Amount for Increased Benefit

[2 PDF pages]

<http://aspe.hhs.gov/daltcp/reports/2011/class/appR.pdf>