

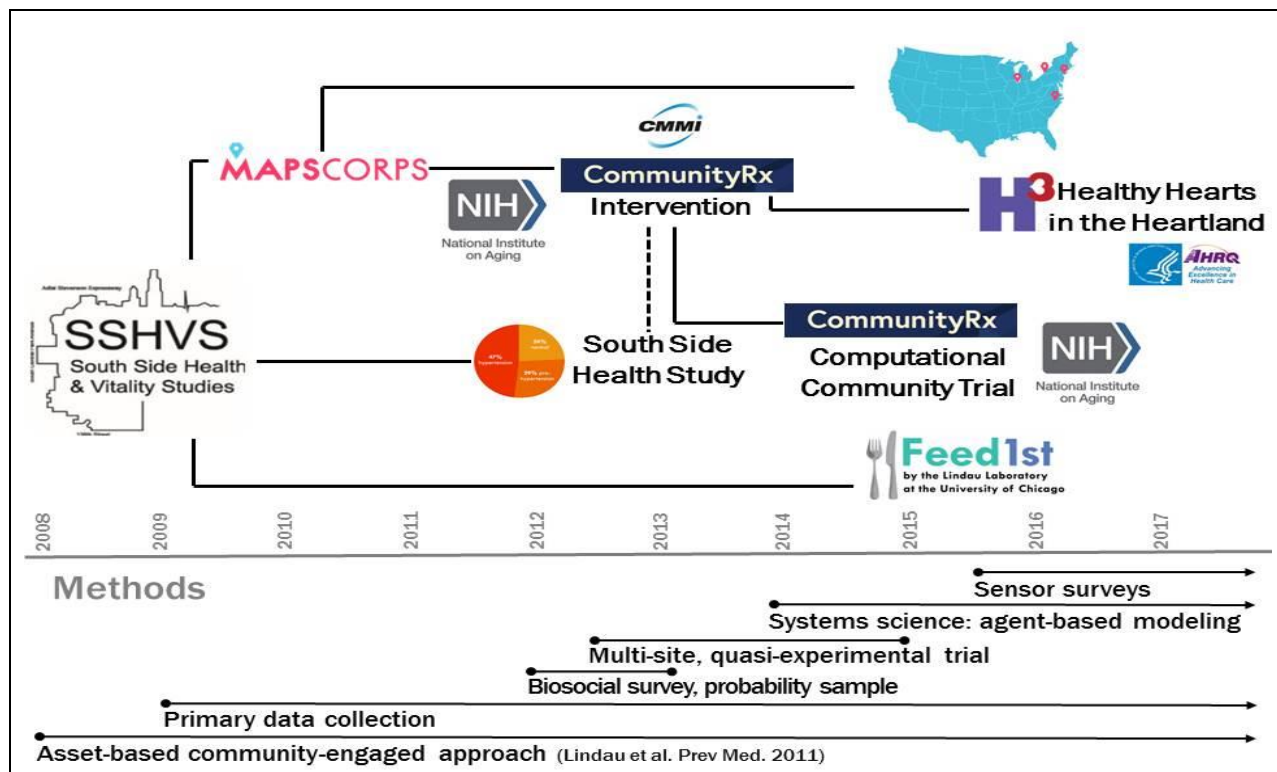


CommunityRx for Community-Residing People with Dementia and Their Caregivers

Stacy Tessler Lindau, MD, MAPP
Professor, Ob/Gyn and Medicine-Geriatrics
The University of Chicago
For the Advisory Council on Alzheimer's Research, Care and Services
7.28.2017

Disclosures

- The CommunityRx project described was supported in part by Grant Number 1C1CMS330997-01-00 (Lindau, PI) from the Department of Health and Human Services, Centers for Medicare & Medicaid Services and by a Technical Assistance Grant from the New York State Health Foundation. It is currently supported by Grant Number 1R01 AG 047869-01 (Lindau, PI) and Grant Number 3R01 AG 047869-03S1 from the National Institutes of Health/ National Institute of Aging, and Grant Number HS 023921-01 (A Kho, PI) from the Agency for Healthcare Research and Quality.
- The contents of this presentation are solely the responsibility of the authors and do not necessarily represent the official views of the U.S. Department of Health and Human Services or any of its agencies.
- Under the terms of the CMS funding opportunity, we were expected to develop a sustainable business model which will continue and support the model that we tested after award funding ends.
- Dr. Stacy Lindau is the founder and owner of a social impact company NowPow, LLC and president of MAPSCorps, 501 (c) (3). Neither NowPow, LLC nor MAPSCorps, 501 (c) (3) is supported through CMS or other federal funding.
- Neither the University nor UCM is endorsing or promoting any NowPow/MAPSCorps Entity or its business, products, or services.



[HOME](#) · [BLOG](#)

[BRIEFING ROOM](#) | [ISSUES](#) | [THE ADMINISTRATION](#) | [PARTICIPATE](#) | [1600 PENN](#)

Calling All Innovators – Health Care Innovation Challenge Open for Great Ideas

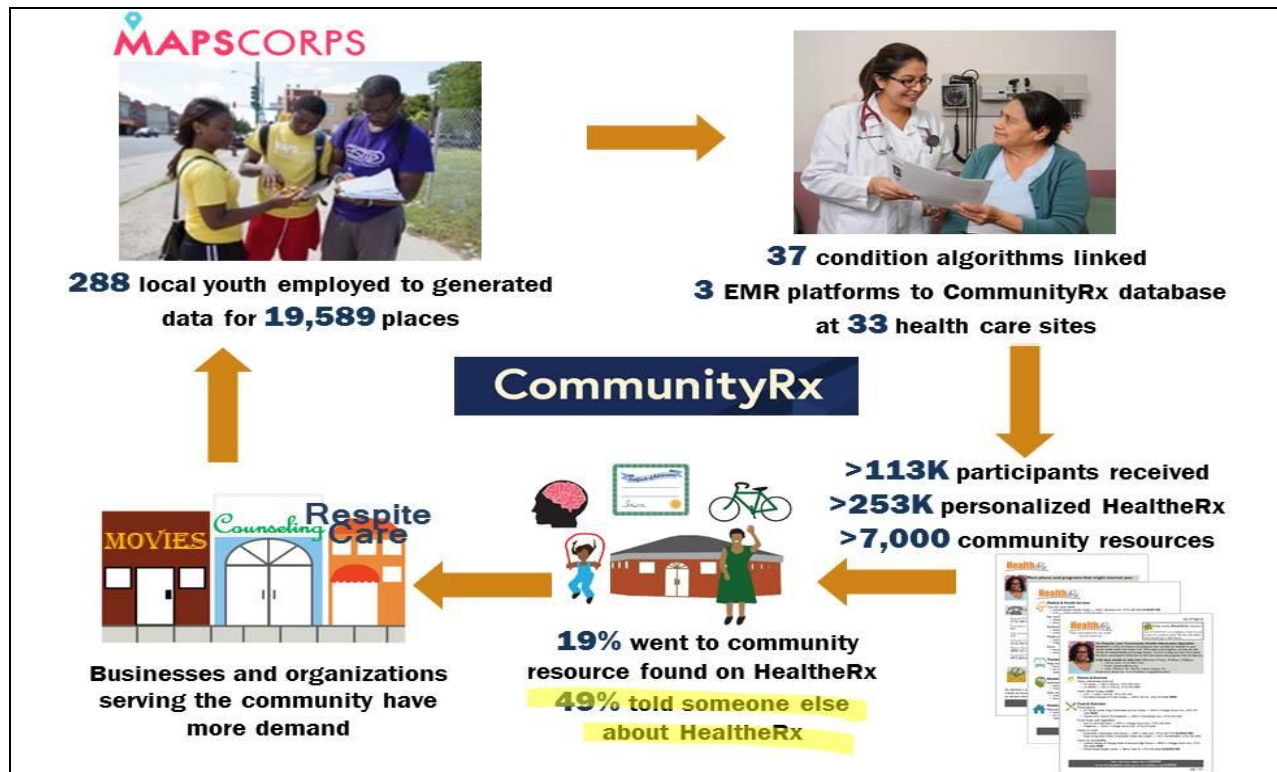
DECEMBER 7, 2011 AT 10:27 AM ET BY ANEESH CHOPRA

Three-Part Aim

1. Better Health
2. Better Health Care
3. Lower Costs
4. Workforce of the future
5. Sustainable business model



Especially interested in ideas that: impact the underserved, address health disparities, reduce the effect of multiple co-morbidities, and/or modify of risk factors



HealthAffairs

HOME | ABOUT | ARCHIVE | TOPICS | BLOGS | BRIEFS | THEME ISSUES

By Stacy T. Linder, Jennifer Makarick, Emily Abramowitz, David G. Baines, Veronica Escamez, Jessica Jerome, David Johnson, Abel N. Kuo, Karen K. Lee, Timothy Long, and Doriane C. Miller

CommunityRx: A Population Health Improvement Innovation That Connects Clinics To Communities

- 16 ZIP codes
- 106 mi²
- 993,812 people
 - 58% < 200% FPL
- >113K participants*
 - 49% 18-64 yrs
 - 64% Female
 - 84% Black
 - 6% Hispanic or Latino
 - 66% Public insurance
 - 24% Private insurance
- EMR integrations
 - Epic, GE Centricity, NextGen

Percent receiving a referral to at least 1 service

- 0
- 2-5
- 6-10
- 11-15
- 16-20
- 21-33

- Clinical sites
- Community-based organizations
- CommunityRx lead site (University of Chicago)

SOURCE Authors' analysis of data for months 9-35 from the CommunityRx database and of population data for 2010-14 from the American Community Survey. **NOTE** *We defined participants as individuals for whom at least one HealthRx was generated

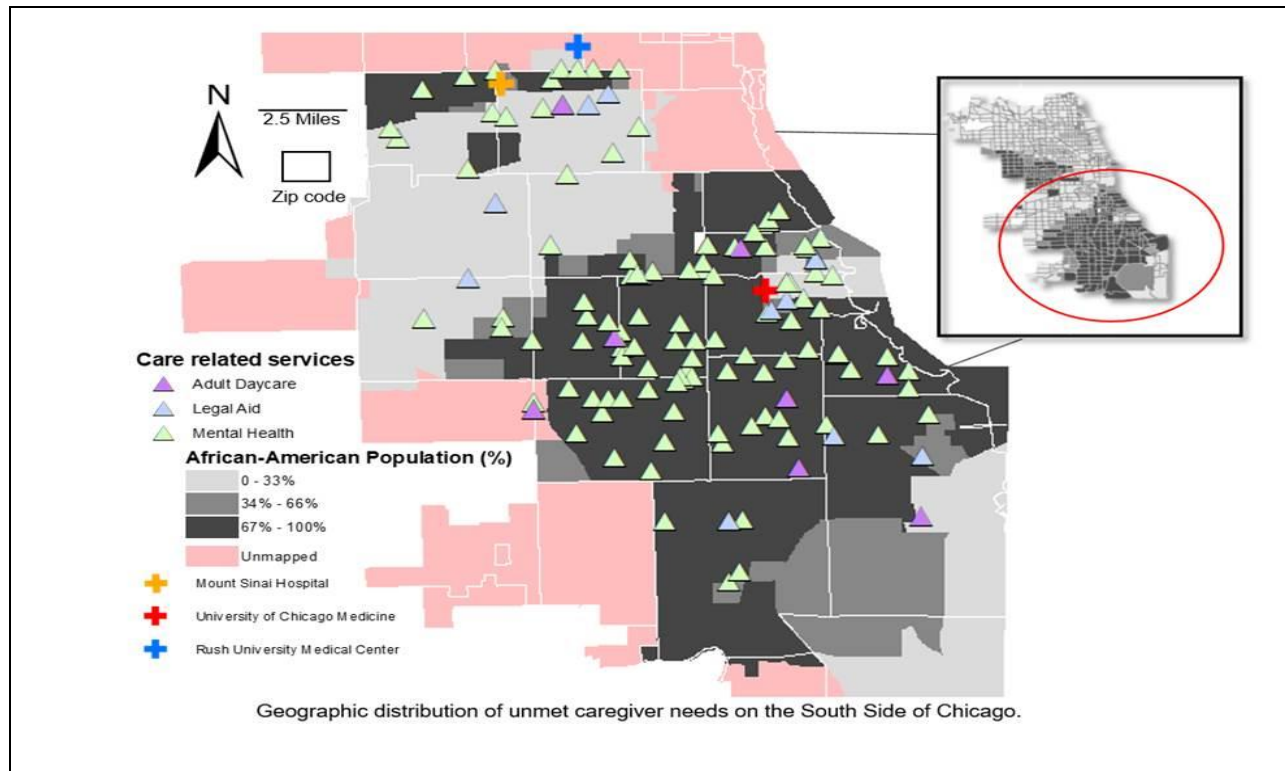
DOI: 10.1371/journal.pmed.1003484
 PMID: 29171473
 PMCID: PMC5020126
 Copyright: © 2018, et al.
 This is an open access article distributed under the terms of the [Creative Commons Attribution License](https://creativecommons.org/licenses/by/4.0/), which permits unrestricted use, distribution, and reproduction in any medium, provided the original author and source are credited.

By Stacy T. Lindes, Jennifer Makarski, Emily Abramovich, David G. Baker, Veronica Escamilla, Jessica Jerome, Daniel Johnson, Abel N. Kuo, Karen K. Lee, Timothy Long, and Dorisae C. Miller

CommunityRx: A Population Health Improvement Innovation That Connects Clinics To Communities

Appendix Exhibit 3. CommunityRx algorithms generated personalized referrals to community resources for basic, wellness, disease self-management and caregiving needs

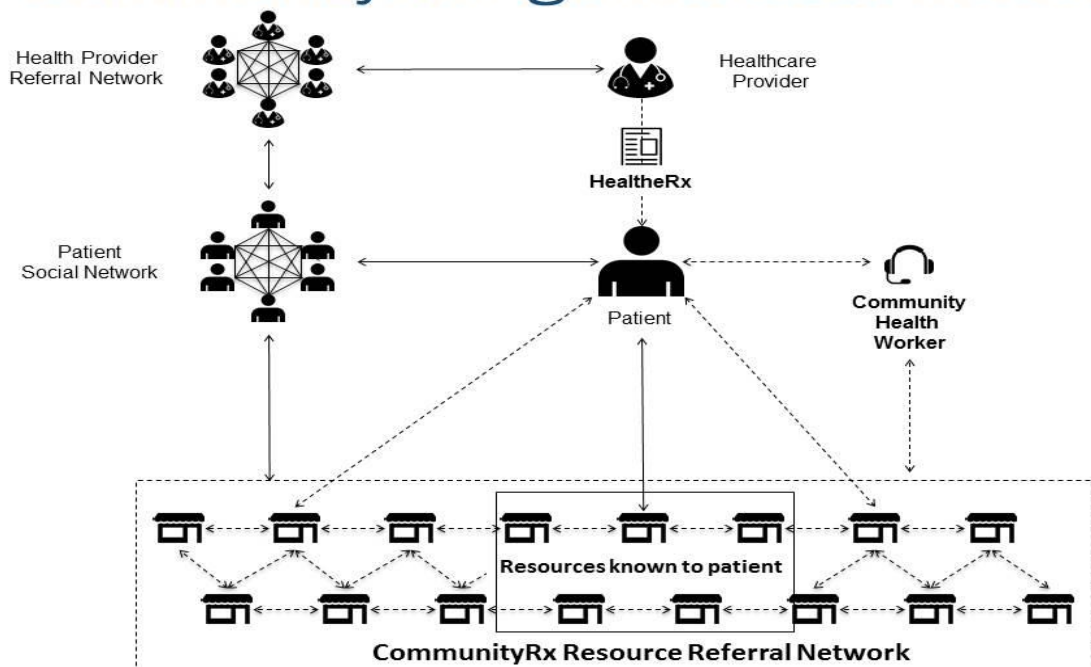
Health and wellness conditions	Study month of algorithm release	HealtheRxs generated for algorithm, months 9-36, number (%)	HealtheRxs generated for algorithm, months 30-35, number (%)
Allergic rhinitis	28	11,930 (4.7)	10,075 (8.5)
Alzheimer's/dementia	28	1,931 (0.8)	1,583 (1.3)
Anemia	28	12,195 (4.8)	10,352 (8.7)
Attention deficit hyperactivity disorder ^a	24	1,696 (0.7)	1,023 (0.9)
<18 years old	28	980 (0.4)	817 (0.7)
18 years or older	28	249 (0.1)	206 (0.2)
Asthma ^a	15	38,497 (15.2)	17,499 (14.8)
<15 years old	28	6,113 (2.4)	5,049 (4.3)
15 years or older	28	14,419 (5.7)	12,167 (10.3)
Arthritis/back pain	24	33,962 (13.4)	21,659 (18.3)
Breast/gynecologic cancer	28	2,377 (0.9)	1,941 (1.6)
Breast/gynecologic cancer survivorship	24	851 (0.3)	529 (0.5)
Congestive heart failure	24	1,389 (0.6)	869 (0.7)
Chronic obstructive pulmonary disease	24	4,576 (1.8)	2,755 (2.3)



“..My buddy was telling me, eventually I will probably have to find a place for her to go full-time. And he said, he told me I need to start saving my money because healthcare is not gonna pay for it, for the full-time care. It’s kinda like you gonna have to pay out of your pocket or whatever. So, I haven’t looked into that yet...”

“I was going to...line dancing class. Line dancing class! That’s lovely. And lots of people do line dancing. But I had to stop that too because I couldn’t keep it up... But I’d say fitness classes, line dancing classes. A lot of seniors, especially African American, they do that. They go out line dancing. Yeah.”

CommunityRx Agent Based Model



Prototype, using fictional data, of CommunityRx forecasting dashboard



Policy Implications for NAPA Goal #3: Expand services and supports for PWD and families



Intensive caring for caregivers: Hyperlocal (geographically and culturally), ongoing, escalating, with special concern for higher poverty communities



Proactive transparency by community-based programs/services that receive government or tax-deductible funding



Sustainability: Incentivize business owners, governments and CBOs to provide on-site support for PWD

Acknowledgements

Lindau Lab



Emily
Abramoohn, MPH



Kelly Boyd



Monica
Christmas, MD



Megan
DePumpo, AM



Mahalia Dalmage



Leilani Douglas



Gillian Feldmeth



Natalia
Gavrilova, PhD



Jessica
Jerome, PhD



Jennifer Makelarski,
PhD, MPH



Chenab Navalkha



Kelsey Paradise



Jerlinda Ross, MD, MS

Current collaborators

- David Beiser, MD, MS
- Tia Kostas, MD
- Chia-Hung Chou, PhD
- Elbert Huang, MD, MPH
- Abel Kho, MD
- Charles Macal, PhD
- Jonathan Ozik, PhD
- Elizabeth Tung, MD

slindau@uchicago.edu

 [@stacylindau](https://twitter.com/stacylindau)

July 28, 2017 -- Advisory Council Meeting #25

The meeting was held on Friday, July 28, 2017, in Washington, DC. The Advisory Council spent the morning discussing information gaps across the three areas of research, clinical care, and long-term services and supports. There was also a presentation on the recently released National Academy of Sciences, Engineering, and Medicine (NASEM) report on preventing cognitive decline. Additional presentations included a presentation on planning and progress towards the October Care and Services Summit and federal workgroup updates. Material available from this meeting is listed below and is also available at <https://aspe.hhs.gov/advisory-council-alzheimers-research-care-and-services-meetings#Jul2017>.

Comments and questions, or alerts to broken links, should be sent to napa@hhs.gov.

General Information

Agenda	[HTML Version] [PDF Version]
Meeting Announcement	[HTML Version] [PDF Version]
Meeting Summary	[HTML Version] [PDF Version]
Public Comments	[HTML Version]

Presentation Slides

2017 National Plan Update and Non-Federal Recommendations	[HTML Version] [PDF Version]
Clinical Services Subcommittee Federal Update	[HTML Version] [PDF Version]
CommunityRx for Community-Residing People with Dementia and Their Caregivers	[HTML Version] [PDF Version]
Dementia Caregiving in the U.S.	[HTML Version] [PDF Version]
Development of the FY 19 NIH Bypass Budget for Alzheimer's Disease and Related Dementias	[HTML Version] [PDF Version]
Implications of a Biologically Based Definition of Alzheimer's Disease	[HTML Version] [PDF Version]
Increasing Opportunities for Choice and Control for Persons with Dementia	[HTML Version] [PDF Version]
Interventions to Prevent or Slow Cognitive Decline, MCI and Dementia in Individuals without Dementia	[HTML Version] [PDF Version]
Living Alone With Dementia	[HTML Version] [PDF Version]

Long-Term Services and Supports Committee Update	[HTML Version] [PDF Version]
Managing Chronic Conditions in People Living with Dementia	[HTML Version] [PDF Version]
Preventing Cognitive Decline and Dementia	[HTML Version] [PDF Version]
Research Summit on Dementia Care	[HTML Version] [PDF Version]
The Many Challenges of Alzheimer's Disease	[HTML Version] [PDF Version]

Videos

Welcome thru Clinical Care	[Video]
LTSS Research	[Video]
Public Comments thru Federal Workgroup Updates	[Video]
Recommendations thru Adjourn	[Video]

Last Updated: 06/27/2018