

Biomedical & Care Research in Dementia: Interdependent & Complementary

Maria C. Carrillo, PhD
Chief Science Officer
Alzheimer's Association

alzheimer's  association®

To provide and enhance care and support
for all affected

To eliminate Alzheimer's disease through
the advancement of research

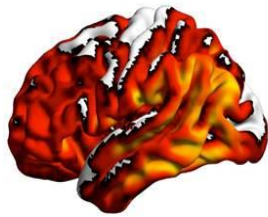
To reduce the risk of dementia through the
promotion of brain health

alzheimer's  association®

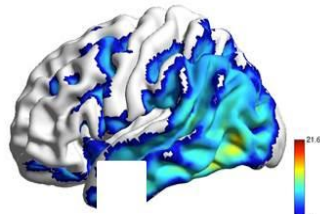


Need for Person-Centered Care

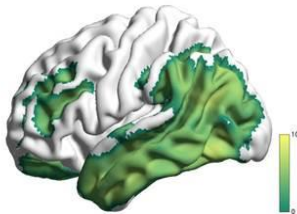
alzheimer's  association®



Beta-Amyloid



Tau



Neurodegeneration

↓
Improve Quality of Life

• All pathologies impact a person's behavior

• Impact the care & support needed

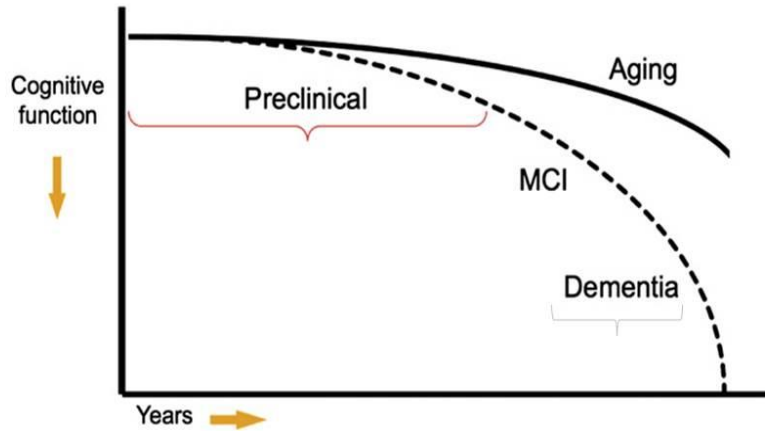
- Beta Amyloid
- Tau
- Inflammation
- Vascular Contributions
- TDP-43
- Other Pathways

Slide adapted from Dr. Gil Rabinovici, UCSF

alzheimer's  association®

55

Continuum of Alzheimer's disease



Adapted from Sperling et al.
2011 *Alzheimer's & Dementia*

alzheimer's  association®

56

Continuum of Alzheimer's disease

Normal Pre-clinical MCI due to AD Alz dementia



Family history, Genes, CSF, blood, eye, MRI, CT, PET, fMRI

Subjective problem in memory or other domain, informant corroborated and measurable on tests; normal overall cognition and ADLs

Clear deficits in 2 or more core cognitive domains; ADLs affected

alzheimer's  association®

57

Continuum of Alzheimer's disease

Normal Pre-clinical MCI due to AD Alz dementia



What are the most appropriate, evidence-based strategies to support individuals with biological evidence but not yet cognitive changes?

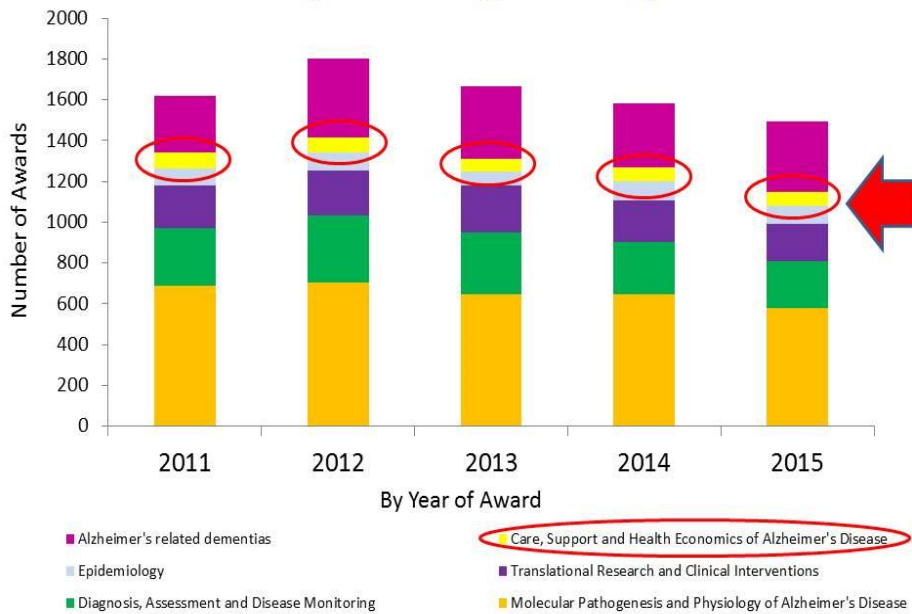
What are most appropriate, evidence-based strategies to best support individuals with MCI due to AD and their care partner?

What are evidence-based strategies to best support people with Alzheimer's dementia and caregivers?

NIA-AA Research Framework for Alzheimer's Continuum

- Continuing advances in understanding of disease
- Dr. Clifford Jack, Chair; Dr. Maria Carrillo, ALZ; Dr. Eliezer Masliah, NIA
- **Public comment through Dec 2017:**
ALZ.org/NIA-AA

Investment Globally in Care, Support & Health Economics of AD Research (2011-2015), According to IADRP



Data from IADRP; <http://www.iadrp.nia.nih.gov>

Since 1993,

alzheimer's 
association®

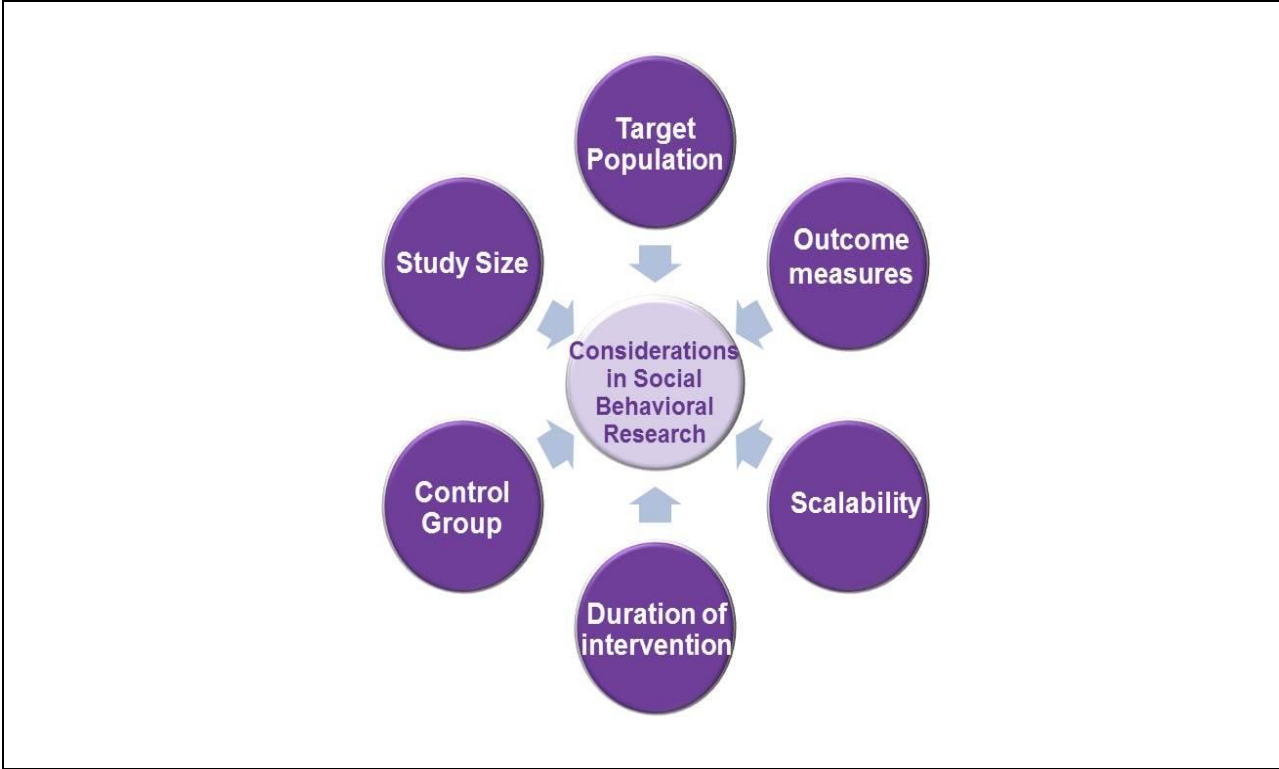
\$43+ Million

260+ Projects

In Care, Social & Behavioral Research

alzheimer's  association®

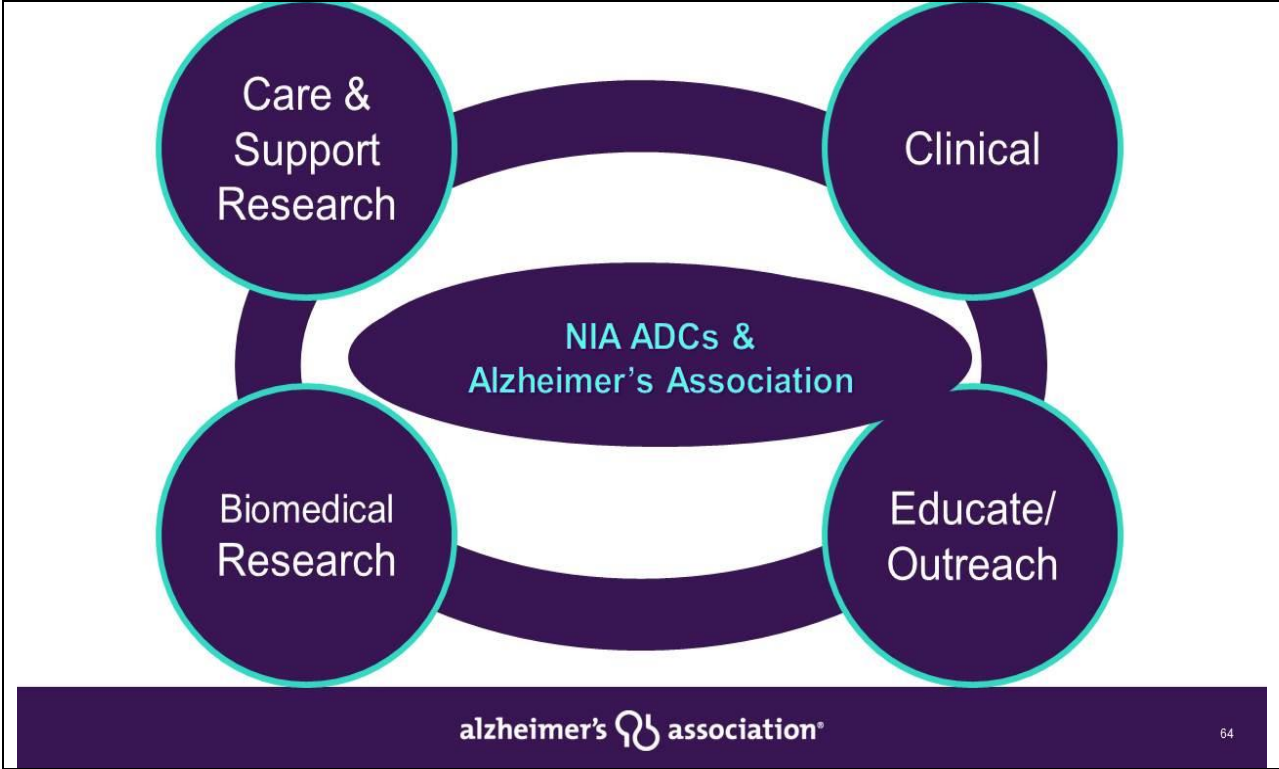
61



What does rigorous evidence based care research look like?

How do we scale research to size so outcomes are ready to implement?

How do we implement evidence based interventions in the community?



University of Wisconsin – Madison Dementia Care Programs

- Partnership btw Wisconsin Alzheimer's Institute (WAI) & Wisconsin Alzheimer's Disease Research Center (ADRC)
- 32 statewide WAI Dementia Diagnostic Clinics with emphasis on rural and underserved communities
- ADRC supplement in partnership with WAI to develop dementia diagnostic clinic on Oneida reservation
- ADRC Project 3 studies a dementia-specific transitional care program focused on patients admitted to UW Hospital
- WAI/ADRC partnership on outreach to African American communities in Milwaukee and Madison, WI
- WAI/ADRC partnership on dementia education for health professionals throughout Wisconsin and beyond
- In partnership with the Alz Association, are developing programs for individuals w/new MCI Dx to increase participation in Clinical Core



**WAI Dementia
Diagnostic Clinic
Network**



Wisconsin Alzheimer's
Institute
Wisconsin Alzheimer's
Disease Research Center

Evidence Based Research Is Key



For Your Consideration:

Evidence-based care and support interventions that help/

Expand understanding of how health systems (broadly) can provide comprehensive, help/

or Create broader treatment protocols for biomedical research - incorporating patient-centered approaches to monitor individual

stress Develop tools that provide on-going care planning or participating

Advance research that understands the cost-benefit and emotional benefit of creating comprehensive networks for medical care and psychosocial care

In the near future ...



Improved Health
Outcomes &
Quality of Life



RECOMMENDED

Care & Support
Interventions

Thank You!