

# Introductory Remarks

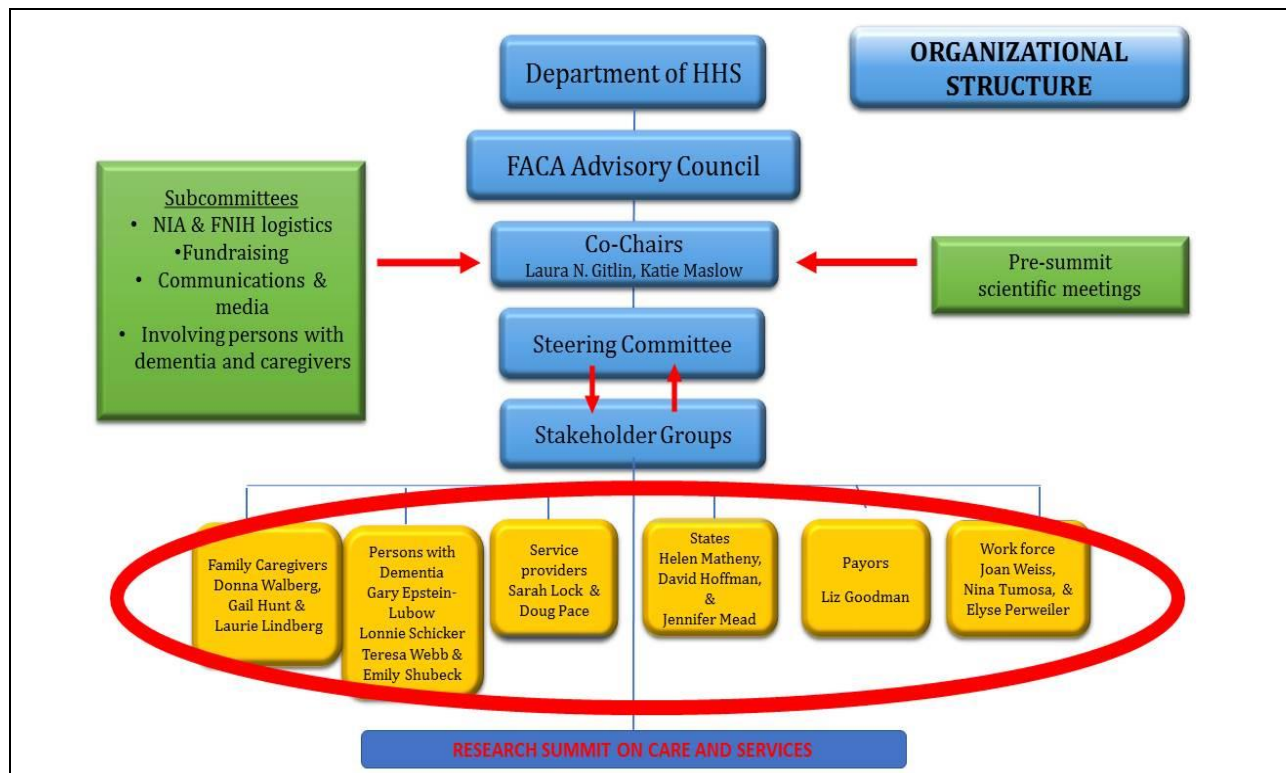
## Summit Co-Chairs:

**Laura N. Gitlin, PhD**  
Johns Hopkins University

**Katie Maslow, MSW**  
The Gerontological Society of America



#DementiaCareSummit



## Steering Committee Members

- Gary Epstein-Lubow, MD (Brown Univ.)
- Lori Frank, PhD (PCORI)
- Richard Hodes MD (NIA; John Haaga, Melinda Kelley, Elena Fazio)
- Ian N. Kremer JD (LEAD)
- Shari M. Ling, MD (CMS)
- Sarah Lenz Lock JD (AARP)
- Helen Matheny, MS (West Virginia Univ)
- Lisa McGuire, PhD (CDC)
- Jennifer Mead, MPH (Oregon Dept. of HS)
- Linda O. Nichols, PhD (VA Medical Center)
- Douglas D. Pace, NHA (Alzheimer's Assoc)
- Melanie (Lonnie) Schicker, EdD, MHSA, RN (Co-chair, Person with Dementia Stakeholder Group)
- Jane Tilly, DrPH (ACL)
- Lois A. Tully, PhD (NINR)
- Joan Weiss, PhD, RN (HRSA)
- Teresa Webb, RN (Co-chair, Person with Dementia Stakeholder Group)

### Co-chairs

Laura N. Gitlin, Ph.D.  
Katie Maslow, MSW

### Executive Committee

Ron Petersen MD, Ph.D. (Mayo Clinic)  
Ruth Katz, MA, (HHS/ASPE)  
Rohini Khillan, MPH (HHS/ASPE)

## Sources of Research Recommendations

### Recommendations generated before Summit

Pre-summit conferences/activities  
Stakeholder groups  
RTI research briefs identify research limitations

### Recommendations generated during Summit

Plenary Summit speakers  
Session chairs/speakers/panelists  
Cross-cutting chairs  
Audience in-person and on-line participation

# Engage!



Tweet to all your followers that you're participating using:

**#DementiaCareSummit**

Tweet us any short thoughts/comments/recommendations you have throughout the Summit using the same hashtag!



For longer comments or recommendations, or for those who do not use Twitter, send us an email at [napa@hhs.gov](mailto:napa@hhs.gov)

Please note, all comments submitted to either #DementiaCareSummit or [napa@hhs.gov](mailto:napa@hhs.gov) will be entered into the public record as comments.



#DementiaCareSummit

# Video, Photography, Social Media Disclosure

*This Summit, "National Research Summit on Care, Services, and Supports for Persons with Dementia and Their Caregivers," is a public meeting. The Summit proceedings are being video recorded, photographed, audio recorded, and closed captioned. By attending this meeting, you grant permission to the National Institutes of Health (NIH) and the Foundation for the National Institutes of Health (FNIH) to record the Summit proceedings through these means and to reproduce, copy, or distribute worldwide any such audio, video, and photography for the purpose of education and information via the Internet, Intranets, print, and social and other media platforms. Please be advised that the news media may attend and report from all presentations. Also, in this public venue, attendees are permitted to capture images and comments of speakers and meeting participants via the use of personal mobile devices, including telephones and tablets, and utilize forms of social media (Twitter, Facebook, Instagram, etc.) to disseminate these images and comments. These activities are not under NIH or FNIH control.*



#DementiaCareSummit

