

Wisconsin Dementia Care Specialists

Kristen Felten, MSW, APSW, Dementia Specialist
NAPA Committee Meeting 10/21/24



1

Overall Purpose

- Enhance quality of life for individuals and families
 - Opportunities for engagement
 - Support for caregivers
- Reduce dementia-related crisis events
 - Pre-crisis planning with families
 - Education for crisis responders

2

2

Overall Purpose

- Reduce burden on systems
 - Support for early identification
 - Support for families throughout the journey
- Brain health across the lifespan
 - Partnering with schools
 - Partnering with public health

3

3

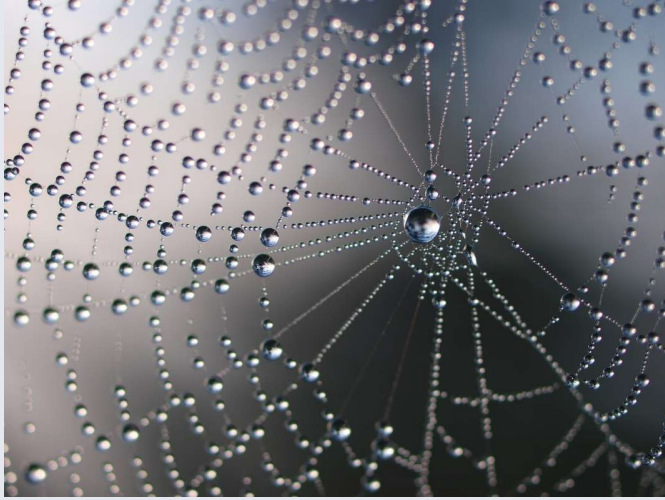
Timeline

2013	Dementia care specialist (DCS) pilot project initiated in five aging and disability resource centers (ADRCs)
2014	Pilot expanded to 11 additional ADRCs, totaling 16 ADRCs
2015	Additional DCS pilot project funded in three Wisconsin tribes to serve Native American communities
2017	2017–2019 state budget included ongoing funding for 19 DCS positions; expanded program to 24 DCS positions
2018	Five additional ADRCs were awarded DCS funding.
2019	2019–2021 state budget included eight new positions for counties and one new position for Tribal nations.
2021	2021–2023 state budget included funding for the program to expand statewide.

4

4

DCS Program Pillars

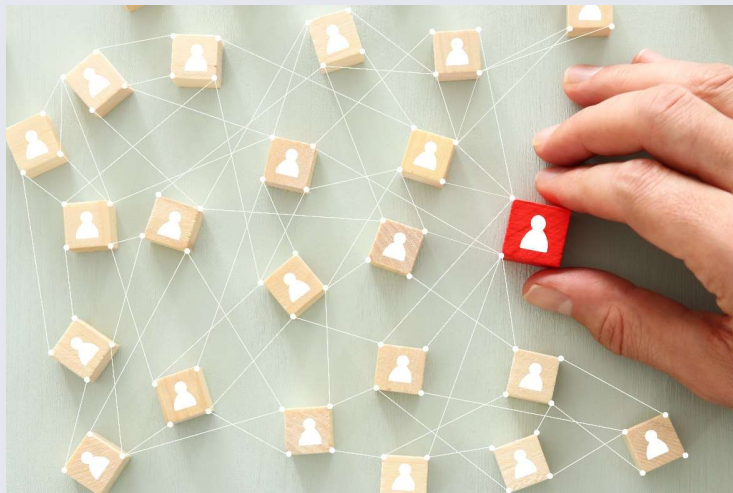


Three pillars
create a web of
support.

5

5

Dementia Capability



6

6

Dementia-Friendly Communities



7

7

Individuals and Families



8

8

DCS in Action



9

9

Questions?

Kristen Felten, Dementia Specialist, Office on Aging
Kristen.Felten@dhs.wisconsin.gov

10

10