

Reducing the Impact of Dementia in America

A NASEM Decadal Survey of the Behavioral and Social Sciences

Elena Fazio, PhD

Jessica Boten, MPH

Chandra Keller, EdD, MPP

Division of Behavioral and Social Research, NIA

NAPA Advisory Council Meeting

October 25, 2021



1

Presentation Outline



What is the Decadal Survey?



Decadal Survey **Research Priorities** and **Detailed Research Needs**



Current NIA AD/ADRD Behavioral and Social Science Activities

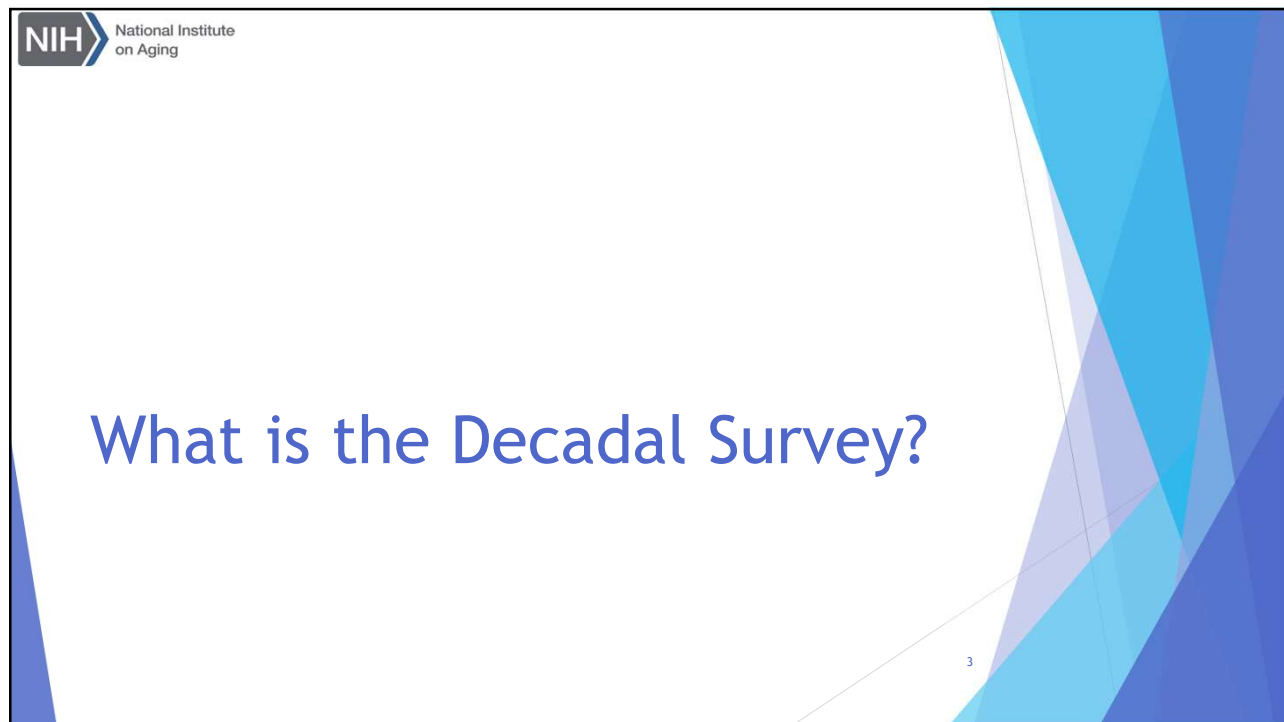


Informing Future Activities



2


2



3

NIH National Institute on Aging

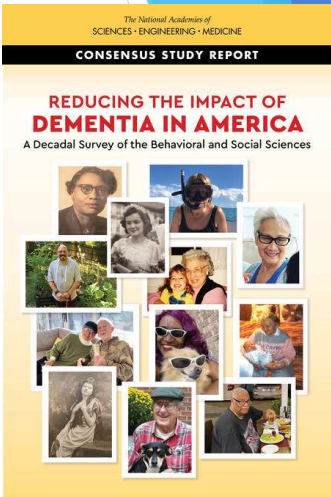
The National Academies of SCIENCES ENGINEERING MEDICINE



NASEM AD/ADRD Decadal Survey

[Reducing the Impact of Dementia in America: A Decadal Survey of the Behavioral and Social Sciences](#) released August 4, 2021

- NIA spearheaded support for this major effort and was joined by several co-funders, including NIH OBSSR, VA, ASPE, AARP, Alzheimer's Association, American Psychological Association, JPB Foundation, and John A. Hartford Foundation
- An ad hoc expert committee was charged with developing a 10-year AD/ADRD research agenda in behavioral and social sciences



4

4

Decadal Survey Activities and Process

Visit the [NASEM AD Decadal Website](#) for more information.

- ▶ **Who:**
 - ▶ Expert ad hoc committee
 - ▶ Advisory panel to the committee comprised of persons living with dementia (PLWD) and care partners
- ▶ **Process:** (1) Information gathering and (2) Committee deliberation and report development
- ▶ **Information gathering:**
 - ▶ Four public workshops
 - ▶ Six commissioned papers
 - ▶ Multiple opportunities for public comment
 - ▶ Advisory panel input

5

Advisory Panel to the Committee: Input Themes

- ▶ Theme 1: Difficulty in obtaining accurate and timely dementia diagnosis
- ▶ Theme 2: Problems in obtaining supports and services
- ▶ Theme 3: Communication challenges with doctors and other health care professionals
- ▶ Theme 4: Fear and loss

6

Why did NIA and partners invest in a Decadal Survey?

- ▶ BSR AD portfolio includes wide range of disciplines, inquiries, and research topics
- ▶ NASEM uses a method to identify lines of research with the greatest potential for impact over a 10-year period
- ▶ NIA was interested in input on wide ranging research areas and topics that cover the full range of its portfolio



7

7


Decadal Survey 10-Year Research Priorities and Detailed Research Needs

8

8

NIH National Institute on Aging

Chapter 2: Prevention and Protective Factors




- ▶ **Understand modifiable factors that can prevent AD/ABDR or reduce or delay their symptoms**
 - ▶ Causal effects of social factors
 - ▶ Effects of health-related behaviors and their management over lifecourse
 - ▶ **Modifiable drivers of racial/ethnic inequality in dementia incidence**
 - ▶ **Mechanisms through which SES factors influence brain health**
 - ▶ Modifiable risk factors that can be the basis for precise recommendations to individuals about decision making and for population level policies to promote brain health
 - ▶ Effective means of communicating the magnitude and degree of potential risk and protective factors to support informed decision making

9

9

NIH National Institute on Aging

Chapter 3: PLWD Outcomes and Lived Experience



- ▶ **Substantively improve experience of PLWD by supporting their dignity and well-being, including balancing safety and autonomy**
 - ▶ Improved screening and diagnosis, including guidance for clinicians that also addresses issues related to disclosure
 - ▶ **Guidance to support ethical and responsible decision making by and for PLWD**
 - ▶ **Outcome measures that reflect perspectives and values of PLWD, their care partners, and communities**
 - ▶ Improved design and evaluation of nonpharmacological interventions to slow or prevent cognitive and functional decline, reduce behavioral and psychological symptoms, improve comfort and well-being, and adequately and equitably serve diverse populations

10

10

NIH National Institute on Aging

Chapter 4: Family Care Partners

- ▶ **Substantively improve experience of family care partners/caregivers**
 - ▶ Identify highest-priority needs for resources and support for family caregivers and how needs vary by subgroup
 - ▶ Identify assets family caregivers bring to their work and needs for supplement skills and training
 - ▶ **Innovations to address practical and logistical challenges of family caregiving, including use of technology**
 - ▶ **Continued progress in data collection and research methods**

CAREGIVER RESEARCH
RESEARCH RESOURCES

11

11

NIH National Institute on Aging

Chapter 5: Role of Community

- ▶ **Facilitate development of communities that support PLWD and care partners, allow for PLWD to live independently, maintain social connections, and mitigate negative effects of past and current SES and environmental stressors**
 - ▶ **Characteristics of communities that influence risk of developing dementia and experience of living with disease**
 - ▶ Documentation of opportunities and resources available in communities and evaluation of their impact, particular attention to disparities in resource access
 - ▶ **Analysis of characteristics of dementia-friendly communities**
 - ▶ Evaluation of innovative approaches to adapting housing, services, and supports to keep PLWD in community and out of institutional care

DEMEMENTIA CARE
CAREGIVER RESEARCH

12

12

NIH National Institute on Aging

Chapter 6: Health Care, Long-term Care, End-of-Life Care

- ▶ **Substantially strengthen the quality and structure of health care and long-term care**
 - ▶ Documentation of diagnosis and care management for PLWD and care partners
 - ▶ **Clarification of disease trajectories to help health systems plan care**
 - ▶ Identification of effective methods for providing services throughout disease trajectory
 - ▶ Development and evaluation of standardized systems of coordinated care for PLWD with multiple chronic conditions
 - ▶ **Effective approaches for integrating and coordinating care services across health care systems and community-based organizations**

13

13

NIH National Institute on Aging

Chapter 6 (cont.): Care Payment Models



- ▶ **Substantially strengthen the arrangements through which most dementia care is funded - traditional Medicare, Medicare Advantage, alternative payment models, and Medicaid**
 - ▶ **Comparison of effects of different financing structures on quality of care and clinical outcomes**
 - ▶ Examination of ways to modify incentives in reimbursement models to optimize care and reduce unnecessary hospitalizations
 - ▶ Development and testing of approaches to integrated financing of medical and social services

14

14

NIH National Institute on Aging

Chapter 7: Economic Costs


- ▶ **Improve understanding of the economic impact of dementia and identify high value, cost-effective interventions**
 - ▶ **Improved understanding of drivers of dementia-related costs**
 - ▶ Estimate of value to PLWD, families, and society of innovations in prevention, diagnostics, and treatment, including pharmacologic treatments
 - ▶ Assessment and quantification of total economic impact of dementia for PLWD and families including current and future national costs

15

15

NIH National Institute on Aging

Chapter 8: Data Collection and Research Methodology



- ▶ **Address key methodological objectives to support needed research**
 - ▶ Expansion of data infrastructure and improved data collection
 - ▶ **Improved measurement of exposures and outcomes**
 - ▶ Adoption of more rigorous study designs, particularly in realm of implementation science, so research findings can be successfully integrated into clinical and community practices
 - ▶ **Development of systematic approaches for integrating evidence from disparate studies**
 - ▶ Improved inclusion and representation of diverse individuals among research participants and researchers

16


16



Current NIA Behavioral and Social Research Activities

17


17



Example Areas of Alignment

Decadal Survey Research Need	Current NIA Activity
Improved screening and diagnosis	SCREENing for Cognitive impairment: Decision-making approved concept and NIA/BSR-sponsored NASEM workshop on preclinical diagnostics
Complex social exposures or behaviors that are relevant to dementia risk	RFA-AG-22-025 Data Enhancements and Analyses to Clarify the Relationship between Education and Cognitive Function (including AD/ADRD)
Leverage existing data sources	Future pilot award opportunities via newly funded Artificial Intelligence and Technology Collaboratories for Aging Research

18



18

NIH National Institute on Aging

Example Areas of Alignment

Decadal Survey Research Need	Current NIA Activity
Platforms to facilitate fielding pragmatic trials embedded in health care systems	PAR-21-308 Pragmatic Trials for Dementia Care and Caregiver Support
Methods for estimating the impacts of new treatments	Health equity and the cost of novel treatments for AD/ADRD approved concept
Improved study designs to facilitate adaptation of nonpharmacological interventions	PAR-21-307 Dementia Care and Caregiver Support Intervention Research

19

19

NIH National Institute on Aging

Alignment with New Care-focused Research Implementation Milestones

Decadal Detailed Research Need	New AD/ADRD Care Milestone Area
Approaches for integrating and coordinating care	Research focused on integration care with particular attention paid to transitions
Financing structure effects on quality of care and clinical outcomes	Research to address the impact of policy and payment models and insurance

20

Visit [NIA's website](#) to see forthcoming new care-related milestones.

20


NIH National Institute on Aging

Alignment with New Care-focused Research Implementation Milestones

Visit NIA's website to see forthcoming new care-related milestones.

Decadal Detailed Research Need	New AD/ADRD Care Milestone Area
Expansion of data infrastructure and improved data collection	Further develop AD/ADRD data and clinical infrastructure and harmonization processes
Guidance to support ethical and responsible decision making by and for PLWD	Research focused on the ethical implications of inclusion of the care partner in the care team

21



21

NIH National Institute on Aging

Informing Future Activities

22

22

NIH National Institute on Aging

Convergence Among Multiple Sources of Input on BSR AD/ADRD Research Priorities

The diagram consists of four overlapping circles: a light blue circle at the top labeled 'NASEM Decadal Survey', an orange circle on the left labeled 'Scientific Workshops', a light green circle on the right labeled 'NIA AD/ADRD Milestones', and a light teal circle at the bottom labeled 'Dementia Care and AD Summits'. The circles overlap in various combinations, with a small '23' at the bottom right of the teal circle.

23

23

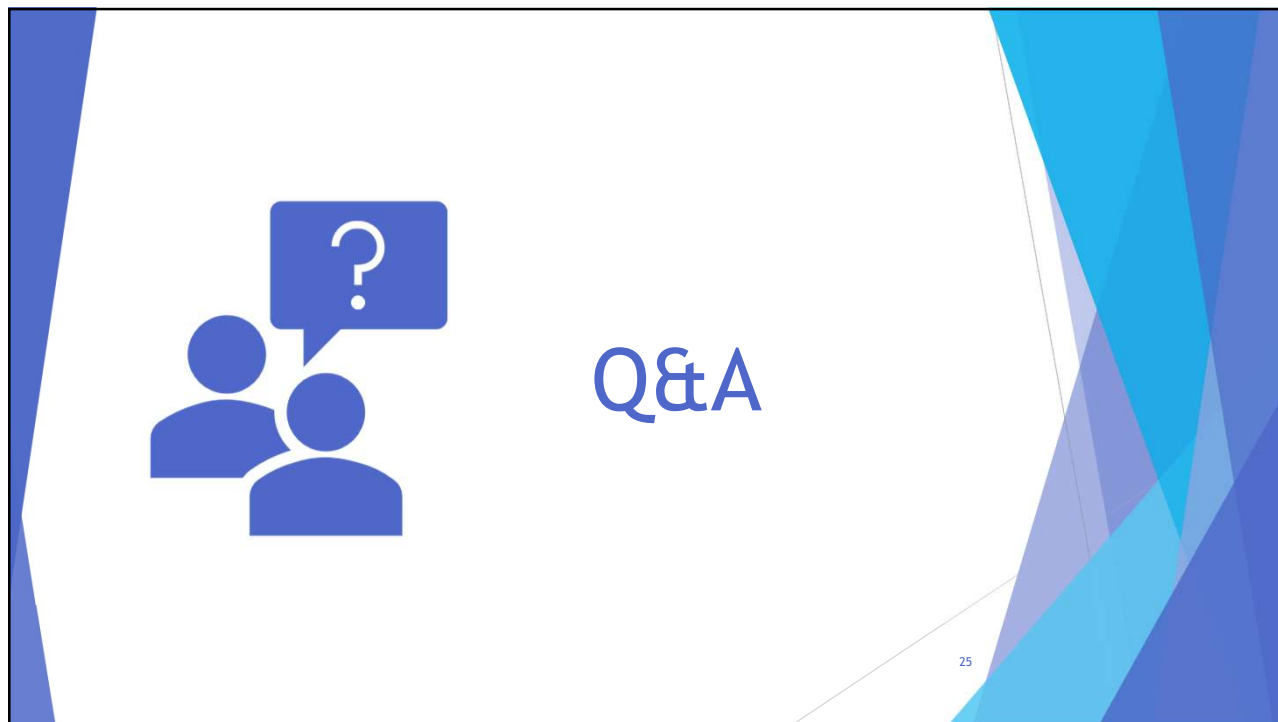
Visit our Website!

- ▶ NIA/BSR recently updated its ADRD webpages describing the behavioral and social science research portfolio areas
- ▶ Visit for more information at <https://www.nia.nih.gov/research/dbsr/ad-adrd>
- ▶ More questions? Email me at elena.fazio@nih.gov

The infographic features a central white circle labeled 'RESEARCH RESOURCES' with a laptop icon. Surrounding it are seven colored circles, each with an icon and a label: 'DISPARITIES' (green, top), 'COGNITIVE + DEMENTIA EPIDEMIOLOGY' (green, top-right), 'BEHAVIORAL + SOCIAL PATHWAYS' (teal, right), 'EARLY PSYCHOLOGICAL CHANGES' (blue, bottom-right), 'PREVENTION' (pink, bottom), 'CAREGIVER RESEARCH' (red, bottom-left), and 'DEMENTIA CARE' (orange, top-left). A QR code is located in the top right corner of the slide.

24

24



25