

A.G. Rhodes

COMMUNITY · WELLNESS · CARE

Those with Young Onset Dementia in the Long-Term Care Setting

Deke Cateau, CEO

1

ABOUT A.G. RHODES

MISSION: A.G. Rhodes provides expert and compassionate rehabilitation therapy and residential care to seniors in metro Atlanta.

Opened in
1904
and is one of Atlanta's oldest nonprofits



3 Locations:
A.G. Rhodes Atlanta
Fulton County
A.G. Rhodes Cobb
Cobb County
A.G. Rhodes Wesley Woods
DeKalb County

Serves
1,100+
Elders each year

100%
Medicaid & Medicare Certified


We offer innovative and nationally-recognized programs including Horticultural Therapy and Music Therapy

We provide short-term and long-term care:
22% Sub-acute care/rehab/short-term recovery
78% Long-term care



84%
Occupancy Rate


575+
Elders transitioned to living back in their communities independently or with some assistance through our Rhodes to Home program

\$53M
Revenues
\$51.5M
Expenses

500+
Employee Care Partners, and more than 50% of those who work full-or-part time have more than 5 years tenure

2



Cure AND Care

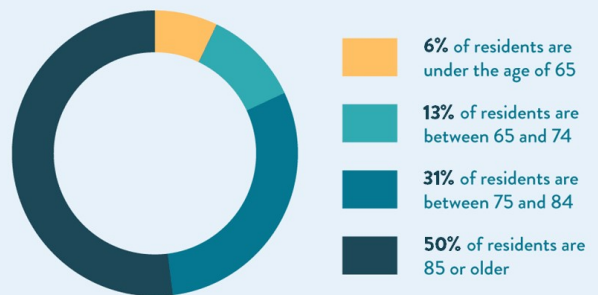
3

Nursing home residents by age



Source: "Average Age of Nursing Home Residents: Age by Percentage and Demographic", a Place for Mom, December 2023

Age demographics in assisted living



Source: "Assisted Living Statistics: Population & Facilities in 2023", a Place for Mom, October 2023

4



Living in a nursing home: What about “young” residents?

- The percentage of residents aged 18 to 64 in residential and long-term care facilities has increased over the years.
- Younger residents feel isolated in these centers that are ill-suited for them and may develop symptoms of depression.
- It is generally accepted that these younger residents are very different from older residents (65 years and older). However, both young and old want to maintain their independence, autonomy, individuality and social activities to feel good.

Quality of life, regardless of age

The criteria young residents use to define quality of life are similar to those of older residents: having privacy, autonomy, maintaining their identity, socializing, feeling at home.

Among their requests, there is often mention of their preference for a living environment that is neither a hospital nor a nursing home, but rather something in between.

Sept. 7, 2022

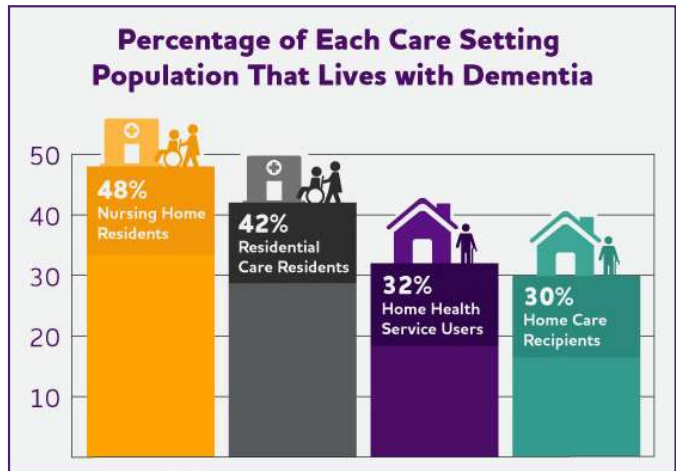


	Dementia/Cognitively Impaired	
Atlanta	83	72%
Cobb	61	53%
Wesley Woods	73	57%
Total	217	60%

As of February 2024



Percentage of Each Care Setting Population That Lives with Dementia



YOUNGER-ONSET DEMENTIA AMONG LONG-STAY NURSING HOME RESIDENTS, 2019			
Age	Total Long-Stay Nursing Home Residents	Percentage with Dementia	Number with Dementia (calculated)
0-19	1,595	0.5%	8
20-34	7,637	3.3%	252
35-49	29,377	8.6%	2,526
50-64	171,010	21.5%	36,767
		TOTAL:	39,554

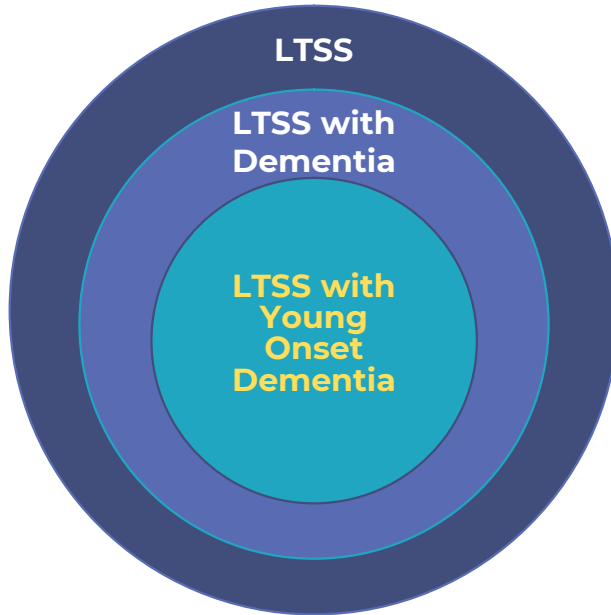
Source: Ne'eman A, Stein M, Grabowski DC. Nursing home residents younger than age sixty-five are unique and would benefit from targeted policy making. Health Affairs 2022;41(10):1449-1459.

“...almost 7 million US older adults are living with Alzheimer’s dementia, and an estimated 200,000 Americans aged fewer than 65 years have early-onset Alzheimer’s disease.”

Source: 2024 Alzheimer’s Disease Facts and Figures report

7

LTSS in a Residential Setting



8

Challenges For Those With Young Onset Dementia In A Long-Term Care Setting



Creating a homelike environment and social connections

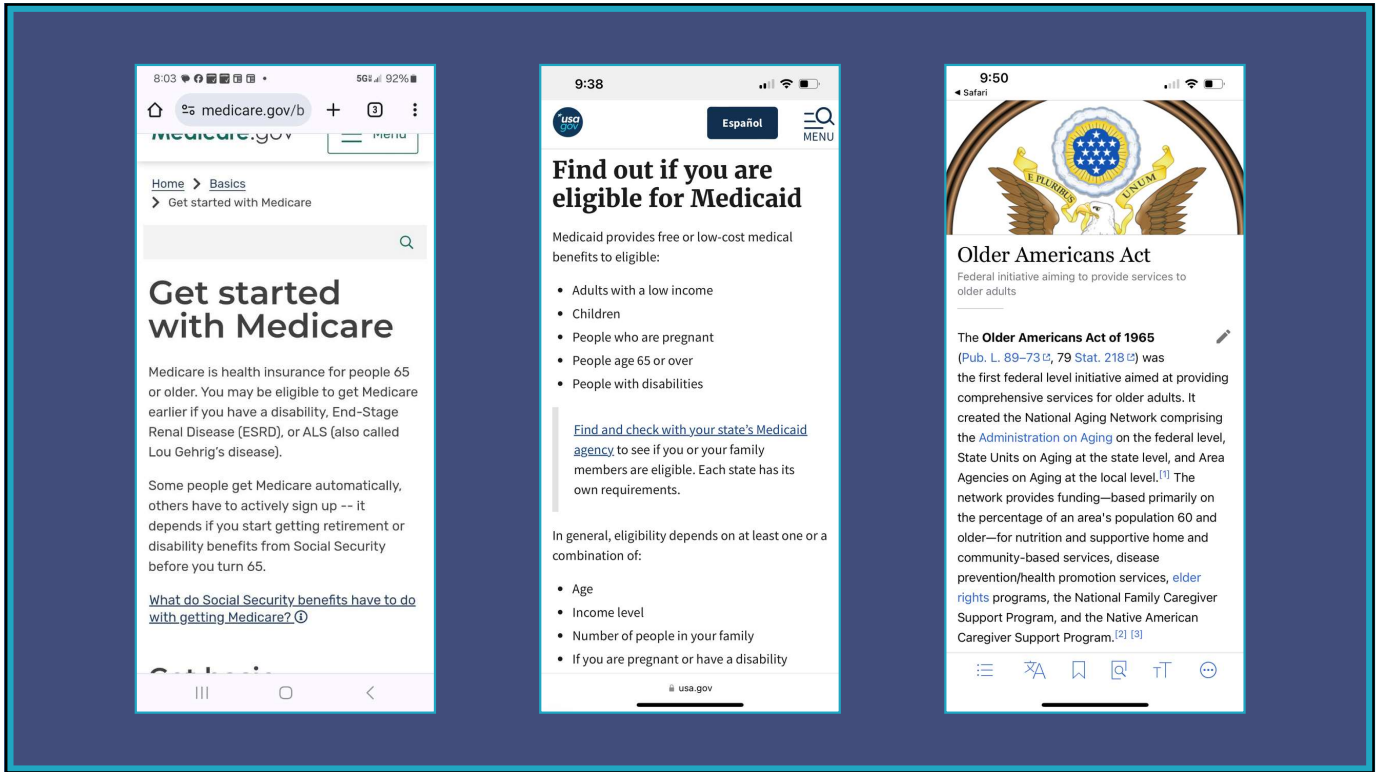


Not qualified for financial resources




Lack of meaningful activities based on age


Cost of Care		Genworth
		USA - National
Monthly cost		2023
Home Health Care		
Homemaker Services		\$5,720
Homemaker Health Aide		\$6,292
<small>Based on annual rate divided by 12 months (assumes 44 hours per week).</small>		
Adult Day Health Care		
Adult Day Health Care		\$2,058
<small>Based on annual rate divided by 12 months.</small>		
Assisted Living Facility		
Private, One Bedroom		\$5,350
<small>As reported, monthly rate, private, one bedroom.</small>		
Nursing Home Care		
Semi-Private Room		\$8,669
Private Room		\$9,733
<small>Based on annual rate divided by 12 months.</small>		





11


So What Are The Solutions?

- 


Create integrated LTC living models vs. segregated, intergenerational models
Incorporate a Person-Centered/Person-Directed Care philosophy
- 

Advocate for Medicare coverage for dementia, including YOD
Advocate for Medicaid coverage for assisted living for dementia
- 

Expand coverage options to include Adult Day Care and Respite Care.
This benefits both the elder with dementia and his/her caregiver.
- 

Expand the Older Americans Act to include services through Area Agencies on Aging for those under 60.
- 

Create activities and programs that appeal to a wider range of ages



12

Rod Hall's Story



Gardening at his Adult Day Care Center

“
*I miss me.
The old me.
The happy me.
The laughing me.
The smiling me.
The gone me.*
”